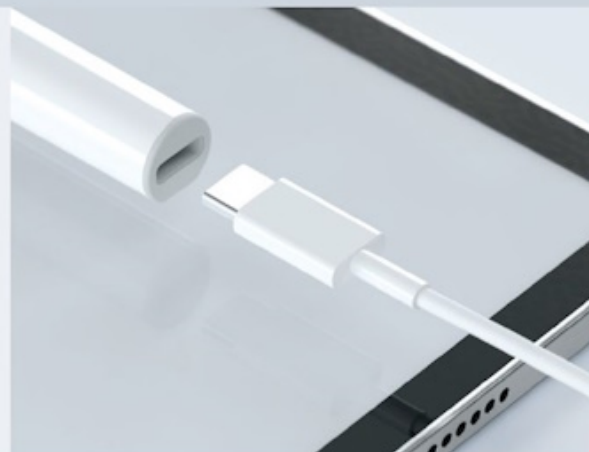


LAMY safari note+



FAQ

Frequently Asked Questions

Version July 2024

#thinkingtools



How do I charge the LAMY safari note+?



Insert one plug of the included cable (USB-C to USB-A) into the socket at the top of the LAMY safari note+ and the other plug into a standard power supply with a USB-A socket. In principle, charging on a laptop or iPad is also possible. Please note that the stated charging times for a full charge refer to charging with a power adapter. The exact specifications for a suitable power supply are: 5 V DC, min. 0.5 A, max. 3 A (15 W).

Can I plug a charging cable directly into the iPad to charge?

Yes.

Can I plug a charging cable directly into my laptop to charge?

Yes.

How long does the battery of the LAMY safari note+ last?

With continuous use, the battery lasts for about 10 hours. Please note, however, that – as with any battery – the performance may decrease over time.

The LED on my LAMY safari note+ lights up red. What does that mean?

If the LED on the LAMY safari note+ lights up constantly red, this means that its battery level is at 20% or lower. Please recharge your LAMY safari note+.

The battery of my LAMY safari note+ was almost empty. I then plugged in the charging cable. What do I have to do to get it to charge?

Insert one plug of the included cable (USB-C to USB-A) into the socket at the top of the LAMY safari note+ and the other plug into a standard power supply with a USB-A socket. In principle, charging on a laptop or iPad is also possible. Please note that the stated charging times for a full charge refer to charging with a power adapter. The exact specifications for a suitable power supply are: 5 V DC, min. 0.5 A, max. 3 A (15 W).

Does the LAMY safari note+ also charge magnetically on the iPad?

No.

Can I change/replace the battery of the LAMY safari note+?

No.

How can I tell that the LAMY safari note+ is charging correctly?

When the LAMY safari note+ is charging, its LED flashes orange.



How do I know that the LAMY note+ is fully charged?



If the LAMY safari note+ is charged and connected to a power supply unit, its LED lights up green. If it is disconnected from the power supply unit, its LED lights up or flashes blue again.

Do I have to turn off the LAMY safari note+ when I'm finished using it?

Not necessarily. After 15 minutes of inactivity, the LAMY safari note+ switches off automatically to save battery power.

What voltage can the power supply have so that I can charge the LAMY safari note+ correctly?

The exact specifications for a suitable power supply are 5 V DC, min. 0.5 A, max. 3 A (15 W).



Can I charge the LAMY safari note+ by magnetically attaching it to the iPad?



No. Neither sticking to the iPad's housing nor charging via induction is possible.

Can I replace the tip of the LAMY safari note+?

Yes, the tip of the LAMY safari note+ is replaceable in the event of damage or wear and is available as a single spare part. The replacement can be carried out independently.

How can I replace the tip of the LAMY safari note+?

To replace the tip of the LAMY safari note+, it is best to pull it out with your thumb and index fingernail. Insert the new tip into the opening at the bottom of the LAMY safari note+.

Does the LAMY safari note+ also hold magnetically on the iPad?

No.

Is the LAMY safari note+ made in Germany?

The LAMY safari note+ was developed in collaboration with our partner Adonit. LAMY develops exclusively in Heidelberg, Germany, while Adonit is based in Taipei, Taiwan.

What colours does the LAMY safari note+ come in?

The LAMY safari note+ is currently available in the following colours:

- all black
- steel black
- white
- red

How do I get replacement tips for a LAMY safari note+?

Two replacement tips are included in delivery. Additional replacement tips for the LAMY safari note+ can be purchased from specialist retailers or directly from the LAMY eShop.

What is the difference to the Apple Pencil products?

The main differences between the LAMY safari note+ and the Apple Pencil products are:

- the ergonomic hand design of the LAMY safari note+
- the ability to load the LAMY safari note+ while writing
- the replaceable tip, which, thanks to its special nature, allows writing to be less noisy
- the iconic cap with temples, which – when put on – protects the tip and the LAMY safari note+ from unintentionally rolling away



Is the LAMY safari note+ waterproof?



No.

How long do the tips last?

It is difficult to give precise information as this depends very much on individual handling and use.

Can I use the LAMY safari note+ with my iPad outside of closed rooms?

Yes.

What are the special features of the LAMY safari note+?

The special features of the LAMY safari note+ are:

- the ergonomic hand design of the LAMY safari note+
- the ability to load the LAMY safari note+ while writing
- the replaceable tip, which, thanks to its special nature, allows writing to be less noisy
- the iconic cap with temples, which – when put on – protects the tip and the LAMY safari note+ from unintentionally rolling away
- its two completely individually configurable function keys

I have lost the cap, what can I do?

A replacement cap can be purchased at the LAMY safari note+ sales point or directly in the LAMY eShop.

Can the LAMY safari note+ be engraved/customized?

Unfortunately, engraving the LAMY safari note+ is currently not logistically possible for private customers. For individualization solutions in the business customer area, please contact: <https://www.lamy-business.com/>

Can I unscrew the tip?

The tip of the LAMY safari note+ can be pulled out and replaced with your thumb and index fingernail or tweezers without screwing movements.

What does the star on the cap mean?

All LAMY safari cap models/writing instruments with a cap look the same from above. So that you can immediately recognize from this perspective which writing instrument you want to remove, we have put codes in the form of simple characters on the caps. Cross for fountain pens, line/slot for rollerball pens, compass star for digital writing instruments and slot with circle for ink cartridge rollerballs.

Can I unscrew the case of the LAMY safari note+?

No.



How do I turn on the LAMY safari note+?



The LAMY safari note+ is switched on by briefly pressing the lower function button once.

How do I turn off the LAMY safari note+?

The LAMY safari note+ is switched off with a single long press (approx. 5 seconds) on the top function button.

How do I know when the tip of the LAMY safari note+ needs to be replaced?

On the one hand, the shape of the tip itself is severely deformed, deformed, and worn on one side. It should be replaced. Due to this, but also due to other factors that may not be clearly visible, the quality of use (font, precision, latency, etc.) may be impaired. This is the right moment for a tip change. The cap provides maximum protection for the tip against external influences, at least while the LAMY safari note+ is not being used.

How can I use the LAMY safari note+ on multiple iPads at the same time?

No special precautions need to be taken. When switched on, the LAMY safari note+ can be used on several iPads at the same time, just as a LAMY safari fountain pen can be used in several notebooks at the same time: just start writing. All functions of the LAMY safari note+ except for the assignment of the function keys work immediately and without any installation or configuration on any compatible iPad. It is important that neither an Apple Pencil nor a stylus from another manufacturer is paired with the iPad. Please unpair them first.

How can I unpair the Apple Pencil from my iPad so that the LAMY safari note+ can be recognized by my iPad?

To unpair Apple Pencil from your iPad, you can follow the steps below:

1. Go to "Settings" on your iPad.
2. Tap "Bluetooth"
3. Look for "Apple Pencil" in the list of paired devices.
4. Tap the info icon (i) next to the "Apple Pencil" entry.
5. Select "Ignore this device" or "Forget this device" to unpair the Apple Pencil from your iPad.

After you complete these steps, Apple Pencil will no longer be connected to your iPad and can be re-paired if you decide to use it again later.

Does the LAMY safari note+ learn my handwriting?

No. The LAMY safari note+ does not have a module for recording, analyzing or storing handwriting or the content written with it.



How can I configure the function keys on the LAMY safari note+?



The function keys are configured within the respective app. Where the corresponding menu item can be found can vary from app to app. This can usually be found in the settings within the app. All functions of the LAMY safari note+ except for the assignment of the function keys and the pressure sensitivity work immediately and without any installation or configuration on any compatible iPad.

When it comes to the function keys, however, our goal was to give both our users and the respective apps as much freedom as possible. The best and most sensible function assignment for the buttons can vary greatly from user to user and from app to app. You can therefore configure the functions of the buttons in the respective apps yourself.

A list of all apps in which the function keys can be configured can be found here: <https://lamy.com/noteplus>

Why do I have to configure the function keys separately in each app?

All functions of the LAMY safari note+ except the assignment of the function keys and the pressure sensitivity work immediately and without any installation or configuration on any compatible iPad.

When it comes to the function keys, however, our goal was to give both our users and the respective apps as much freedom as possible. The best and most sensible function assignment for the buttons can vary greatly from user to user and from app to app. You can therefore configure the functions of the buttons in the respective apps yourself.

A list of all apps in which the function keys can be configured can be found here: <https://lamy.com/noteplus>

I have enabled Bluetooth, the LAMY safari note+ is switched on, but it is still not recognized by the app. What can I do?

The most common reason for this is that either an Apple Pencil or a third-party stylus is paired with the iPad. Disconnect and please try again.

My LAMY safari note+ was already connected to an app, but now it is no longer recognized. What can I do?

Pairing with an app to specifically configure the function keys works best if the app is first opened and then the LAMY safari note+ is turned on.

My LAMY safari note+ is white, but is displayed in black in the apps menu. Is my LAMY safari note+ really connected to the app?

Yes, for logistical reasons, the information about the colour of the LAMY safari note+ is not stored on its firmware when the device is delivered. In all apps in which the function keys can also be configured, the displayed colour can be selected in the settings for the LAMY safari note+.



How do I connect the LAMY safari note+ to my iPad?



All functions of the LAMY safari note+ except the pressure sensitivity and the assignment of the function keys work immediately and without any installation or configuration on any compatible iPad. It is important that neither an Apple Pencil nor a stylus from another manufacturer is paired with the iPad. Please unpair them first.

The LAMY safari note+ is paired in the settings of the respective app. The exact location may vary from app to app.

Pairing is only possible and necessary in apps from our partners. A list of these apps can be found here: <https://lamy.com/noteplus>

For which functions of the LAMY safari note+ do I have to connect it to the iPad or a specific app?

All functions of the LAMY safari note+ except the pressure sensitivity and the assignment of the function keys work immediately and without any installation or configuration on any compatible iPad. It is important that neither an Apple Pencil nor a stylus from another manufacturer is paired with the iPad. Please unpair them first.

The LAMY safari note+ is paired in the settings of the respective app. The exact location may vary from app to app.

Pairing is only possible and necessary in apps from our partners. A list of these apps can be found here: <https://lamy.com/noteplus>



Which iPad models is the LAMY safari note+ compatible with?



The LAMY safari note+ is compatible with almost all iPad models, these are

- iPad (6th, 7th, 8th, 9th, 10th)
- iPad mini (5th, 6th)
- iPad Air (3rd, 4th, 5th, 6th)
- iPad Air 13" (1st)
- iPad Pro 11" (1st, 2nd, 3rd, 4th, 5th)
- iPad Pro 12.9" (3rd, 4th, 5th)
- iPad Pro 13" (1st)

A current list can always be found here: <https://lamy.com/noteplus>

Which iPad operating systems is the LAMY safari note+ compatible with?

Compatible iPad models must have at least iOS 12.2 or higher versions of iOS installed. Higher versions can also be versions of iPadOS.

Is the LAMY safari note+ also compatible with other non-Apple tablets?

No.

I have an iPad, but I'm not sure what operating system it runs. How do I find that out?

The information about the version of the operating system on an iPad can be found as described here: <https://support.apple.com/de-de/HT201685>

The compatibility information says that the LAMY safari note+ is compatible with iOS 12.2 and above – why doesn't it work on my iPhone that has iOS 17.1 installed?

The LAMY safari note+ – like the Apple Pencil – is only compatible with iPads, as Apple's corresponding protocol stipulates. From the introduction of iPads until around 2019, iPads also ran on the iOS operating system; since around 2019, Apple has been developing its own operating system for iPads, iPadOS. Since it is our aim to keep the LAMY safari note+ backwards compatible for several years, it is even compatible with iPads that do not yet run iPadOS but rather iOS, namely version 12.2 or higher.

Does the LAMY safari note+ also work with paperlike films?

The LAMY safari note+ is designed to function perfectly directly on the iPad display. However, tests have shown that it often works even with many slides.

Is the LAMY safari note+ compatible with an iPhone?

No. The LAMY safari note+ – like the Apple Pencil – is only compatible with iPads; This is what the corresponding "Apple Pencil Protocol" provides.

Can I attach the cap of the LAMY safari note+ to the back of the case?

Yes, but it doesn't click into place – unlike its counterpart from the range of analogue writing instruments, the LAMY safari.



Can I work on several iPads at the same time with a LAMY safari note+?



Yes. This is because all functions of the LAMY safari note+, except for the assignment of the function keys and the pressure sensitivity, work immediately and without any installation or configuration on any compatible iPad. It is important that neither an Apple Pencil nor a stylus from another manufacturer is paired with the iPad. Please unpair them first.

I have downloaded a new iPadOS, is there anything I need to pay attention to when using the LAMY safari note+?

When Apple introduces new operating systems, incompatibilities may theoretically arise in the future. We always strive to remain compatible with new iPad models and versions of the iPad operating system iPadOS. However, it cannot be ruled out in the future that Apple will introduce changes or new features that limit the compatibility of third-party products.

Can I use multiple LAMY safari note+ on one iPad?

Yes.



How long does my LAMY safari note+ warranty last?



The warranty period valid and stipulated by law in the respective countries applies.

Does the LAMY safari note+ record and/or send my data?

No. However, no general statement can be made about which data is collected or not collected for use within the apps used. Please see the data protection declaration of the respective app.

How is the disposal of the LAMY safari note+ organized?

LAMY pays the applicable disposal tax in each country. The LAMY safari note+ can be disposed of in every country and region in accordance with the regulations for the disposal of small electrical devices. Please find out about the relevant requirements and options on site.

Assortment Digital Writing



I have a LAMY safari AI-star EMR, can I update it so that it also works on iPads?



No, unfortunately that is not possible. Different technologies and communication protocols are used for different tablets from different manufacturers.

More information about the product range in the digital writing area can be found here: <https://shop.lamy.com/digital-writing>

I have a non-Apple tablet and I also want a pen like the LAMY safari note+ that I can use to write on my tablet. What can I do?

LAMY also offers other digital writing instruments that are compatible with a variety of other tablets. Further information about all LAMY digital writing instruments can be found here: <https://shop.lamy.com/digital-writing>

Why does LAMY now also produce digital writing instruments?

Writing on digital surfaces is the natural evolution of writing by hand. To date, however, there is no other manufacturer of digital writing instruments that, in addition to the technical aspect, also has mastered hand ergonomics, which is so important for healthy and fatigue-free writing.

Where can I buy the LAMY safari note+?

The LAMY safari note+ is available in the LAMY eShop, the LAMY flagship stores and of course in specialist retailers. Here is the link to the LAMY eShop: <https://lamy.com/noteplus>

Digital Writing – Classic meets smartness

Iconic, distinctive design, perfect ergonomics and the highest quality make the LAMY safari note+ a real writing instrument for the digital world - suitable for everyone in the Apple Ecosystem. The LAMY safari note+ is the only one of its class with an ergonomic design and a cap to protect the tip. Available in several colors, the LAMY safari note+ also embodies the proven Lamy tradition of self-development and individuality through color selection. Simply switch it on and get started: Whether drawing, painting, organizing, editing images, editing videos or playing games - the LAMY safari note+ is a versatile companion in everyday life, at work, at university or school for using a wide variety of apps on iPad. A writing experience that goes beyond simple notes - precise, responsive and inspiring. The possible use cases of LAMY's digital writing instruments are almost unlimited. They give every personality, every attitude to life and every message its own individual form of expression.

Size (W x H x L): 2.28 x 1.57 x 9.53 mm

Weight: 3 g



Ergonomic grip zone

The ergonomic grip zone typical of the LAMY safari model also ensures long, fatigue-free writing with the LAMY safari note+.



Soft, precise tip

Thanks to its soft, easily replaceable tip, the LAMY safari note+ enables almost silent writing on the iPad.



Clip & cap

The cap of the LAMY safari note+ protects its tip; the self-springing clip holds it securely in place.



Long battery life

The LAMY safari note+'s battery lasts up to 10 hours and can be recharged to 100 per cent within 1 hour via its USB-C port.

And even more features of the LAMY safari note+



Get started right away

Thanks to its use of Apple's "Pencil Protocol", most of the LAMY safari note+'s features require no installation or configuration: simply switch it on and get started straight away!



Compatible with all iPads from 2018

Thanks to its use of Apple's "Pencil Protocol", the LAMY safari note+ is compatible with all iPads that have been on the market since 2018: a full list of the compatibilities can be found [here](#).



Pressure sensitivity

Different line thicknesses can be created by pressing the LAMY safari note+ with varying force on the surface of the iPad when writing, colouring or drawing; feature only available in partner apps.



Tilt sensitivity

The tilt sensitivity of the LAMY safari note+ recognises the angle at which it rests on the surface of the iPad and can produce narrow and wide strokes; feature available in all apps.



Palm rejection

The palm rejection function of the LAMY safari note+ can distinguish between the palm and the tip of the pen, thus preventing unintentional marking or scrolling; feature available in all apps.



Configurable function buttons

The LAMY safari note+ has two function buttons that can be assigned individually. This function is only available in partner apps.



Status display via LED light

The LED light on the LAMY safari note+ indicates the battery charge level and the status of pairing with apps. Pairing takes place via Bluetooth and is only available in partner apps.

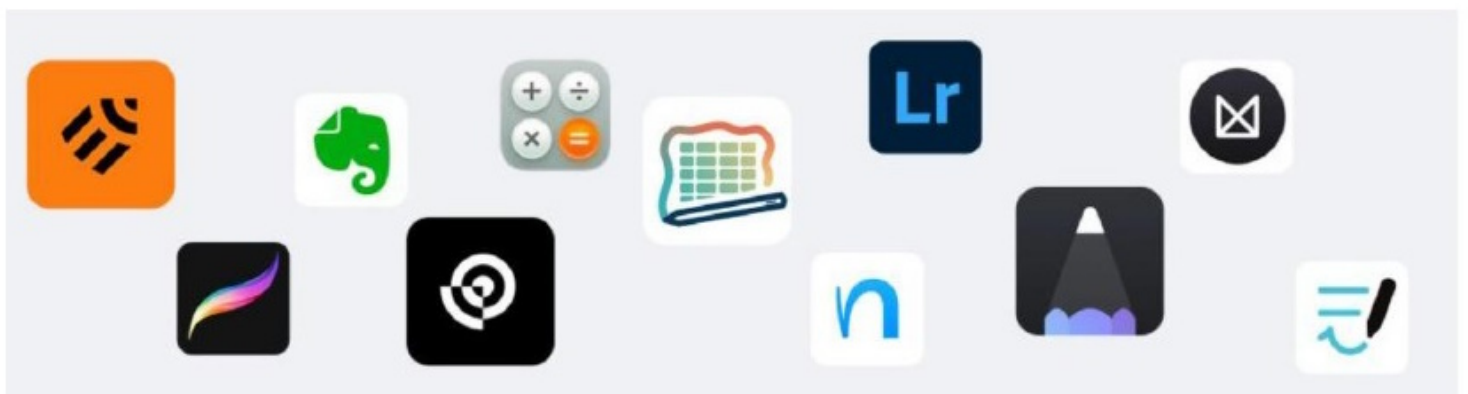


Status display via LED light

The LED light on the LAMY safari note+ indicates the battery charge level and the status of pairing with apps. Pairing takes place via Bluetooth and is only available in partner apps.









The best apps for the LAMY safari note+

With the right apps, you can unleash the full potential of the LAMY safari note+ and open up the variety of features in digital writing – discover apps for note-taking, organising and calculating, for designing, drawing and sketching, for playing, painting and composing.



How the LAMY safari note+ compares to its competitors

The LAMY safari note+ is the only one in its class with an ergonomic design. It offers pressure and tilt sensitivity and a battery life of up to 10 hours. The replaceable tip is protected by a cap. The function buttons can be configured individually. The pen is available in white, red, all black and steel black.

	LAMY safari note+	APPLE Pencil 2nd gen	APPLE Pencil USB-C	Logitech Crayon
 Pressure sensitivity	✓	✓	✓	×
 Tilt sensitivity	✓	✓	✓	✓
 Battery life	up to 10 hours	up to 12 hours	not specified	up to 7.5 hours
 Replaceable tip	✓	✓	✓	✓
 Tip protection	✓	×	×	×
 Function buttons	✓	✓	×	×
 Ergonomic design	✓	×	×	×
 Colour selection	white, red, all black, steel black	white	white	grey, orange

What are the differences to the Apple Pencil?

The main differences between the LAMY safari note+ and the Apple Pencil products are:

- the hand-ergonomic design of the LAMY safari note+
- the option of also charging the LAMY safari note+ while writing
- the replaceable tip, which, thanks to its special design, makes writing less noisy
- the iconic cap with a bracket, which – when in place – protects the tip and prevents the LAMY safari note+ from rolling away unintentionally

Which iPad operating systems is the LAMY safari note+ compatible with?

At least iOS 12.2 or later versions of iOS must be installed on the compatible iPad models. Older versions can also be versions of iPadOS.