

New Product Specifications

PRO-USE 241

Mechanical pencil

A New Model Equipped with On/Off Function for “Hayaai Mechanism” Launched from PRO-USE Series

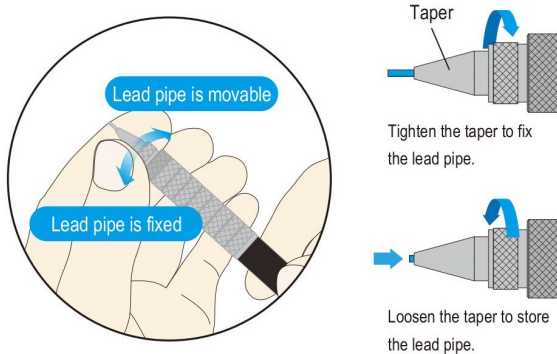
Platinum Pen is launching PRO-USE 241, a further enhanced model of PRO-USE 171 released in 2017. The PRO-USE series designated for professional drafting purposes debuted 35 years ago. The first two digits of the three-digit number in the product name indicate the year of release, and the last digit is counted up each time a derivative model is released. Created based on the 171 model, the newly released model allows you enjoy four writing styles in one mechanical pencil. It also comes equipped with the company’s proprietary “OLEeNU Guard Mechanism” that prevents lead breakage. Different features are equipped in one mechanical pencil so that you can select from four styles to create your own unique feel to the pencil.



Comes with Platinum Pen’s time-tested technologies that can be turned on or off as you wish

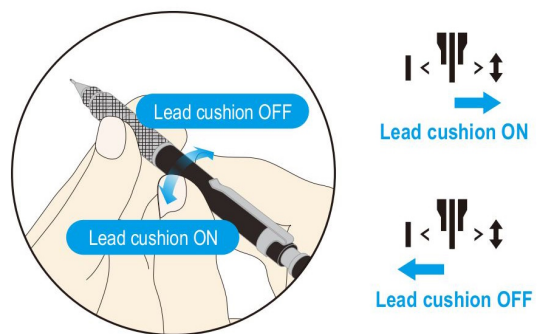
On/off function for “Hayaai Mechanism”

Tighten the taper to fix the lead pipe. Allow the lead pipe to move by loosening the taper.



On/off function for “Lead Cushion Switch”

By twisting the body while holding the gripper, the Lead Switch Mechanism can be switched on or off. When ON, the cushion holds the lead and absorbs shocks during writing. When OFF, the lead is fixed, providing a firm writing experience ideal for drawing lines with a ruler.



Four selectable mechanical pencil functions in one

	Hayaai Mechanism	Lead Switch Mechanism
For heavy users who write a lot continuously	ON	ON
For stenographers, reporters and hardy note takers who want to write fast	ON	OFF
For creators (equivalent to PRESS MAN)	OFF	ON
For industrial designers	OFF	OFF

New Product Specifications

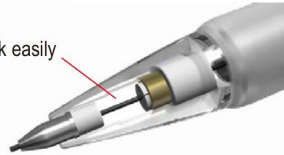
PRO-USE 241

Mechanical pencil

**Equipped with the “OLEeNU Guard Mechanism”
that protects the lead from external shock.
Newly designed grip with knurling.**

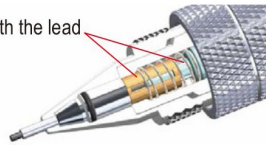
The two clutch parts built into the taper fully protect the lead from shock. When pushed, the two parts work jointly to minimize the gap between the mechanism that grasps the lead and the tip, which causes the lead easily broken, protecting the lead inside the pencil from external shock when dropped or on the move. Users can write smoothly at any time with less stress.

The gap makes the lead to break easily



Our conventional product

The clutch parts work jointly with the lead



OLEeNU Guard Mechanism

*OLEeNU Guard Mechanism: A registered trademark of Platinum Pen Co., Ltd. Launched in 2009, the unique mechanism prevents the lead inside the pen from breakage.

*Hayaai Mechanism: A registered trademark of Platinum Pen Co., Ltd.; launched in 1979. As the name “Hayaai Mechanism” derived from the Japanese term meaning “quick” indicates, it does not require you to click the top pencil button every time you need to extend lead. In Platinum Pen’s standard, it does not require up to four clicks.

*PRESS MAN: A registered trademark of Platinum Pen Co., Ltd. Since its launch in 1978, the mechanical pencil with 0.9 mm lead is an enduring bestseller.