

*Kaweco*  
GERMANY, SINCE 1883.



# KAWECO CONNECT EMR

## EMR-TECHNOLOGY

EMR  
Technology



### EMR Technology

During our childhood, we grew up with writing, drawing and sketching on paper. However, the elegance of handwriting was reserved for our hands only. Digital imitation, especially where and with what amount of pressure the pen is placed and glides on a tablet, is a technical challenge. This challenge can now be met with the help of smart technologies. One of them is Wacom's EMR technology, which is based on electromagnetic resonance. With the help of sensors, an electromagnetic signal is detected, which combined with an alternating grid pattern generates a magnetic field.

The magnetic field is reduced to approx. 5 mm above the surface of the glass and can thus register the position of the writing instrument as well as the angle and pressure.

The EMR technology inserts for the Kaweco AL Sport, can be screwed into the fountain pen or gel rollerball very easily and they have over 4000 pressure levels. Therefore pixel-exact writing, typing and/or drawing with a suitable software (e.g.B. Photoshop or Inkscape) are possible. This pen also never needs to be charged.

**Kaweco**  
GERMANY, SINCE 1883.



# KAWECO CONNECT EMR EMR-TECHNOLOGY

TECHNICAL  
*Details*



## Technical details

The Kaweco Connect EMR Insert can be purchased separately or already screwed inside the Kaweco AL Sport Fountain Pen Black. Nevertheless, it's also possible to screw the insert into any Kaweco AL Sport Fountain Pen or Rollerball.

|                         |                        |
|-------------------------|------------------------|
| Measurement pen (open): | 127 mm                 |
| Measurement insert:     | 67 mm                  |
| Charging:               | None                   |
| Pressure points:        | 4.096                  |
| Line width:             | depends<br>on pressure |
| Palm Rejection:         | available              |

# DEVICES WITH EMR-TECHNOLOGY

A

## Acer

Chromebook Spin 311  
Chromebook Spin 511 (R752TN-G2, for GIGA)  
Chromebook Spin 512  
Chromebook Spin 11 (R751TN-N14N)  
Chromebook Spin 13  
ConceptD 7 Pro  
ConceptD 9 Pro  
ConceptD 7 Ezel  
ConceptD 7 Ezel Pro  
Chromebook Tab 10 (D651N-F14M)  
Switch 7 Black Edition

## AHA

Paperless Tablet 15

## ASUS

Chromebook Tablet CT100  
Chromebook Flip C213NA-BWxxxx  
Chromebook Flip C214MA-BWxxxx  
Chromebook Spin 511 (R752TN-G2, for GIGA)

B

## Boyue

Likebook Muses  
Likebook Mimas  
Likebook Alita

C

## CTL

Chromebook Tab Tx1  
Chromebook NL7TW-360 for Education  
Chromebook NL7TW  
Chromebook NL7TWB

## cube 酷比魔方

Stylus/i7 手写板  
CEP01 (Pen part)

## Computer Systems

LIVA TE10EA3

D

## DELL

Chromebook 5190 2-in1  
Inspiron Chromebook 14 2-1 (7486)  
Dell Canvas 27

## Dospara Diginnos

raytrektab DG-DO8IWP  
raytrektab DG-D10IWP

# DEVICES WITH EMR-TECHNOLOGY

E

## ErenEben

T11M  
T10 (EBEN 80008)  
T8S

F

## Fujitsu

ARROWS Tab Q507/PE  
ARROWS Tab Q507/P-SP  
ARROWS Tab Q508/SE  
ARROWS Tab Q508/SB  
ARROWS Tab Q509/VB  
ARROWS Tab Q509/VE \*  
ARROWS Tab Q737  
ARROWS Tab Q5010/CE \*  
ARROWS Tab Q5010/DE \*  
ARROWS Tab Q5010/DEG \*  
ARROWS Tab Q5010/EEG \*  
ARROWS Tab Q5011/GE  
arrows TAB WQ2/D1 \*  
arrows TAB WQ2/E1 \*  
arrows TAB WQ2/E2 \*  
Arrows Tab WQ2/71  
Arrows Tab WQ2/F1  
Arrows TAB EH \*  
Link  
QUADERNO A5 (Gen.2)  
QUADERNO A4 (Gen.2)

G

## Great Wall

Boca 5"  
VTM19

H

## Haier International

Digital Paper P9

## HP

HP Chromebook x360 11 G1 EE  
HP Chromebook x360 11 G2 EE  
HP ZBook x2 G4

\* Please note, that the pen tip might leave traces on the rough screen of this device.

# DEVICES WITH EMR-TECHNOLOGY

J

**Just System/Fujitsu**  
Just ゼミ」 (中学生向け)

K

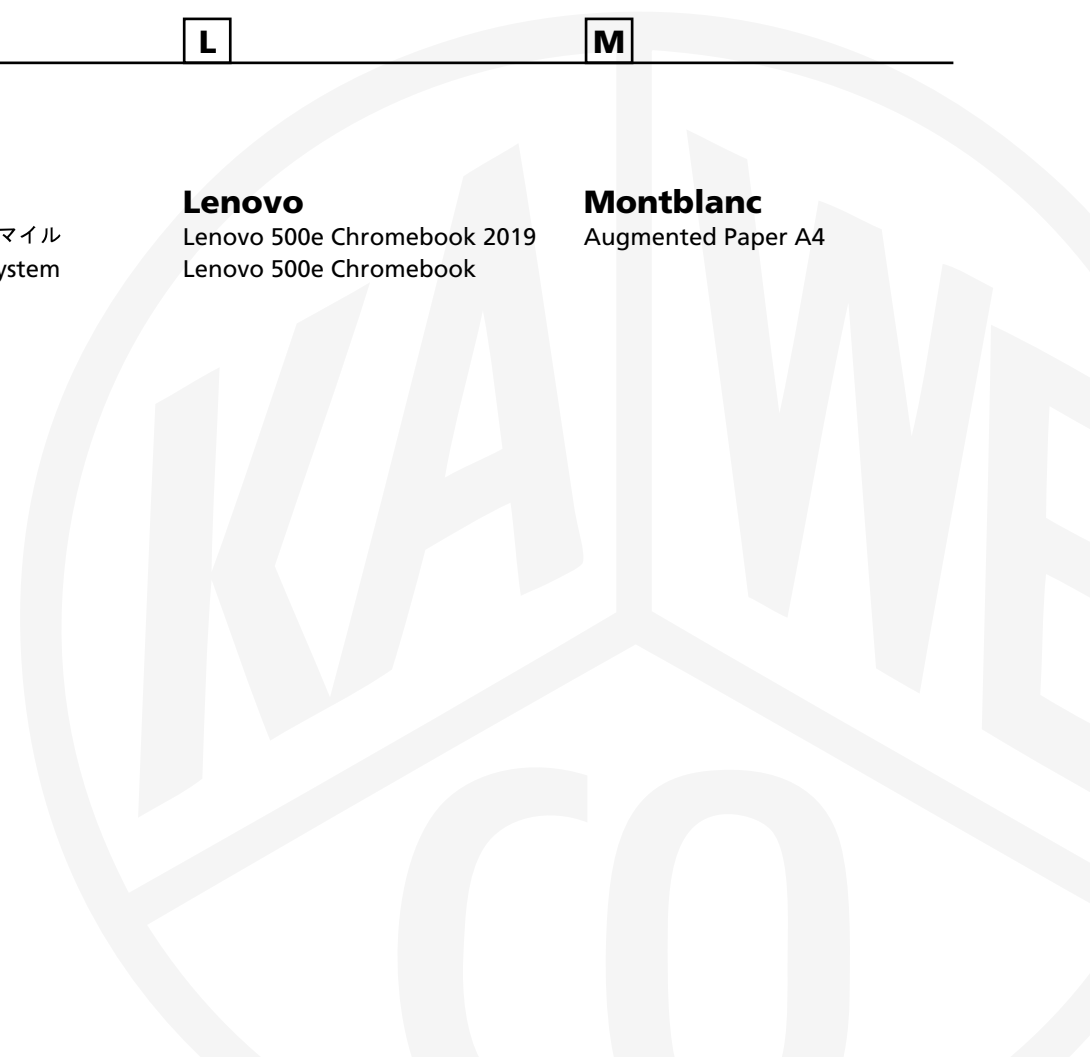
**Kyocera**  
ジャストシステム「スマイル  
ゼミ」後継機 Just System

L

**Lenovo**  
Lenovo 500e Chromebook 2019  
Lenovo 500e Chromebook

M

**Montblanc**  
Augmented Paper A4



# DEVICES WITH EMR-TECHNOLOGY

O

## **OKAY**

G3.1

Supernote A6 Agile

## **Onyx**

E-ink Onyx10.7

BOOX Nova Pro

BOOX Note

BOOX Note Pro

BOOX Max2

P

## **Panasonic**

TOUGHBOOK CF-33

## **Pendo Tech**

HYPEN

Digit-Note A4 Pro

## **PocketBook**

CAD Reader

R

## **reMarkable**

reMarkable tablet

S

## **Samsung**

R7 (A-Note)

Zeus 15

Zeus 13

Terra

Galaxy S21 Ultra

Galaxy Note 8

Galaxy Note 8.0

Galaxy Note 9

Galaxy Note 10

Galaxy Note 10 Lite

Galaxy Note 10+

Galaxy Note20 Ultra

Galaxy Tab 1 Plus

Galaxy Tab Active2

Galaxy Tab Active3

Galaxy Tab S3

Galaxy Tab S4

Galaxy Tab S5

Galaxy Tab S6

Galaxy Tab S6 Lite

Galaxy Tab S7

Galaxy Tab S7 FE

# DEVICES WITH EMR-TECHNOLOGY

S

## Samsung

Galaxy Tab S7+  
Galaxy Tab S8  
Galaxy Tab S8+  
Galaxy Tab A 8.0 (2019)  
Galaxy Tab A Plus  
Galaxy Tab S9 FE (10.9")  
Galaxy Tab S9 (11")  
Galaxy Tab S9+ (12.4")  
Galaxy Tab S9 FE+ (12.4")  
Galaxy Tab S9 Ultra  
Galaxy Book Go  
Galaxy Book 12  
Galaxy Book 10.6  
Galaxy Book 2  
Galaxy Book Pro 360 (13.3")  
Galaxy Book Pro 360 (15.6")  
Galaxy Book2 Pro 360 (13.3")  
Galaxy Book2 Pro 360 (15.6")  
Galaxy Book3 360 (13.3")  
Galaxy Book3 360 (15.6")  
Galaxy Book3 Pro 360 (14")  
Galaxy Book3 Pro 360 (16")

S

## Samsung

Galaxy Chromebook  
Galaxy Chromebook 2  
Chromebook Pro  
Chromebook Pro 13"  
Notebook 9 Pen 13" (2019)  
Notebook 9 Pen 15" (2019)  
Chromebook Plus  
Chromebook Plus V2  
Galaxy Book Flex 13  
Galaxy Book Flex α 13.3"  
Galaxy Book Flex 15  
Galaxy Note FE (Fandom Edition, nur in Korea) \*  
Galaxy Note 4 \*  
Galaxy Note 5 \*  
Galaxy Note 8 \*  
Galaxy Note 9 \*  
Galaxy Note 10 Lite \*  
Galaxy Note 10 \*  
Galaxy Note 10+ \*  
Galaxy Note 20 \*  
Galaxy Note 20 Ultra \*  
Galaxy s21 Ultra \*

S

## Samsung

Galaxy s22 Ultra

## Shanghai Ratta

Supernote A5  
Supernote A6 Agile

## Staedler

Samsung

## Score

GVIDO

## Smart Technology

Supernote A5

T

## Technology Sigung Education

EeWrite E-Pad

## Team UC

MobiScribe

Z

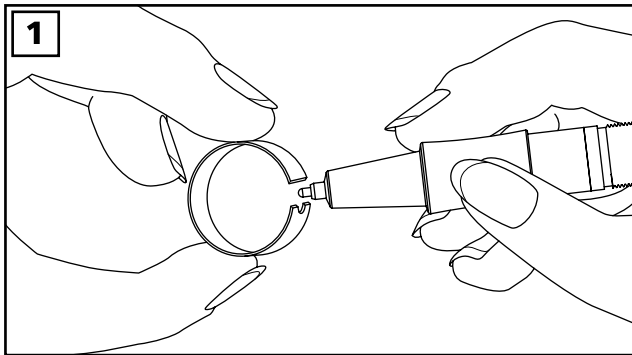
## Zebra

Xplore Bobcat  
Motion C5t  
Motion F5t  
Motion J3500  
Motion R12

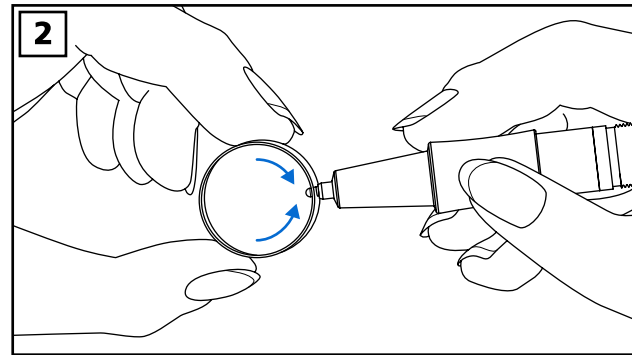
\* To be able to use the Kaweco Connect EMR insert/digital pen, please make sure to change your smartphone settings accordingly.



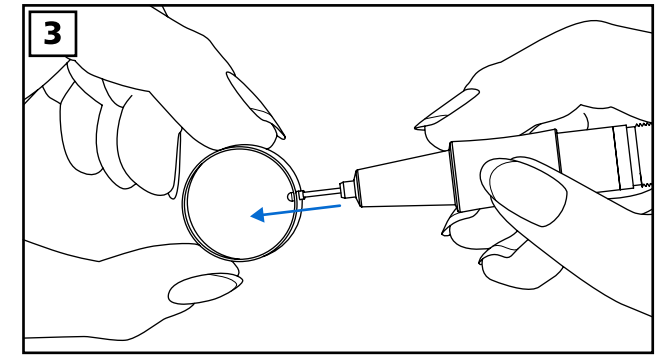
# KAWECO CONNECT EMR CHANGING REFILL



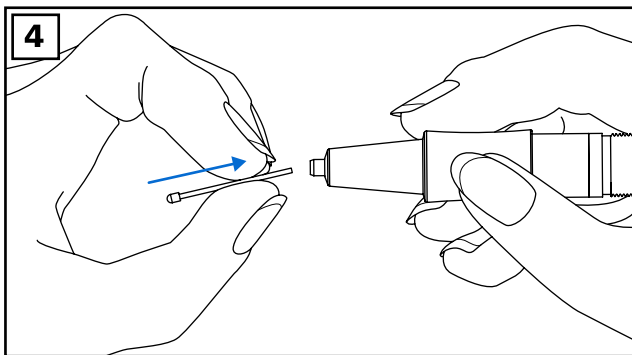
1) Position the round metallic tweezer in front of the nib of the Kaweco EMR insert.



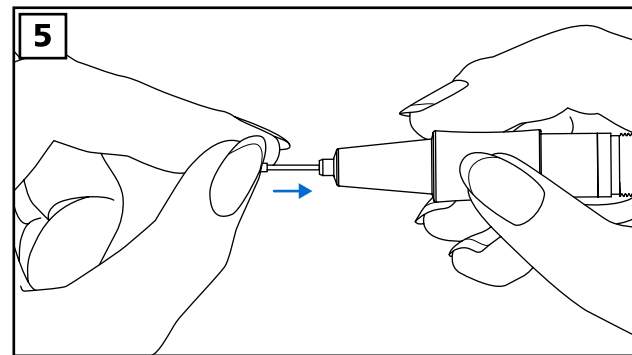
2) Push the tweezer slightly together, so that both metallic sides hold the nib inside of the small immersion.



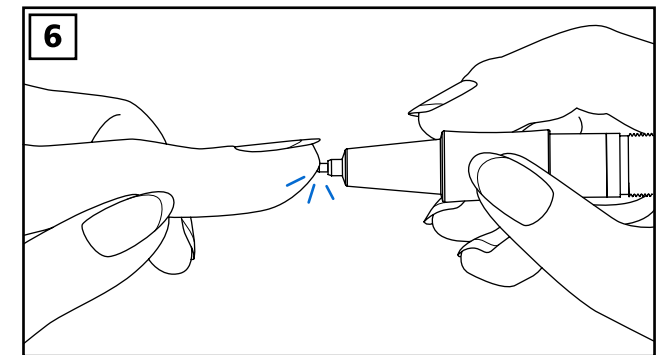
3) Hold and move the tweezer with the nib slowly away from the Kaweco EMR insert.



4) Take a new refill and position it in front of the Kaweco EMR insert opening. Be aware to slide the refill into the insert with the thinner end ahead.



5) Slide the new refill carefully and even into the insert.



6) Push the refill all the way to the stop in. The Kaweco EMR insert is now ready for use.

**Kaweco**  
GERMANY, SINCE 1883.



VISIT US AT: [KAWECO-PEN.COM](http://KAWECO-PEN.COM)

KAWECO, h&m gutberlet gmbh  
Max-Brod-Str. 11, D-90471 Nürnberg  
mail: [info@kaweco-pen.com](mailto:info@kaweco-pen.com)  
fon: +49 (0)911 81866-0